



# 156 MHz Saw Filter

## Part Number: AM156S809



Parameters Description	Unit	Minimum	Typical	Maximum
Center Frequency (Fo)	MHz	-	156.00	-
Insertion Loss at Fo	dB	-	17.00	18.50
Amplitude Ripple Variation at Fo ± 20.0 MHz	dBp-p	-	0.35	0.80
Group Delay Variation at Fo ± 20.0MHz	nsec	-	15	35
Absolute Delay at Fo	µsec	-	0.65	-
Temperature Coefficient	ppm/°C	-	-86	-
Bandwidth at -1.0dB	MHz	44.00	45.43	-
Bandwidth at -40.0dB	MHz	-	53.70	55.00
<b>Relative Attenuation:</b>				
10.0 ~ 114 MHz	dB	40	55	-
199 ~ 239 MHz	dB	40	52	-
239 ~ 410 MHz	dB	40	45	-

Parameters Description	Unit	Minimum	Typical	Maximum
Operation Temperature Range	°C	-40	-	+85
Storage Temperature Range	°C	-40	-	+85
Maximum DC Voltage	V	-	-	10
Maximum Input Power	dBm	-	-	10
Source Impedance (Single Ended) <sub>1</sub>	Ω	-	50	-
Load Impedance (Single Ended) <sub>1</sub>	Ω	-	50	-
Package Size and Type	13.3 x 6.5 x 1.8 mm		V	

Reference DCR: D050619-01A

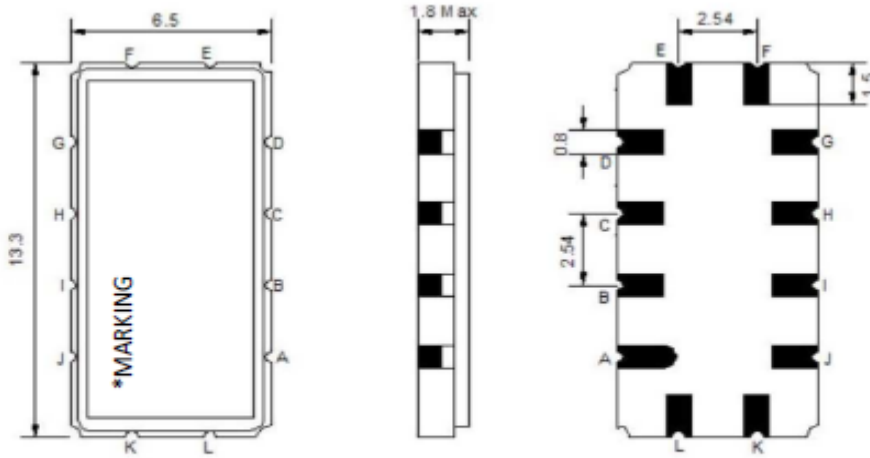


# 156 MHz Saw Filter

## Part Number: AM156S809

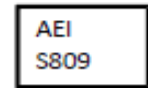
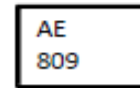


### Outline Drawing:

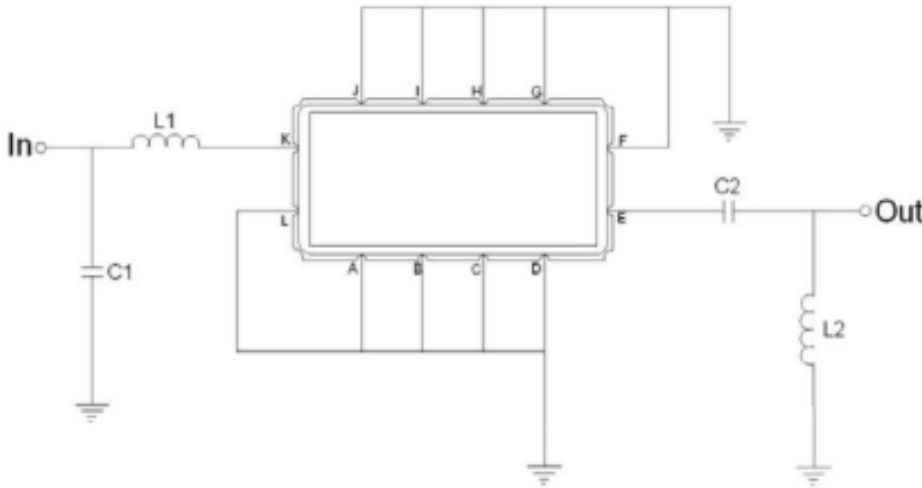


Pin Description	
Ground	A B C D F G H I J L
Input	K
Output	E

\*Note: Product marking may be as follows:



### Testing Environment:

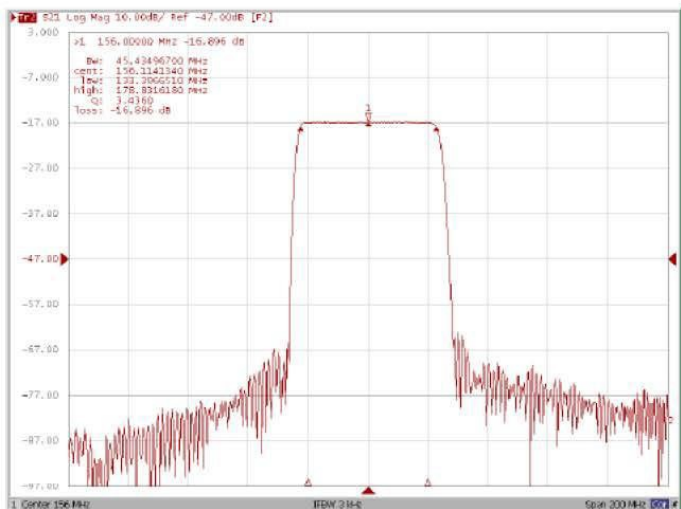


Test Fixture & Values	
Input	L1 = 27nH , C1 = 39pF
Output	L2 = 39nH , C2 = 100pF
Source/load impedance:	50Ω

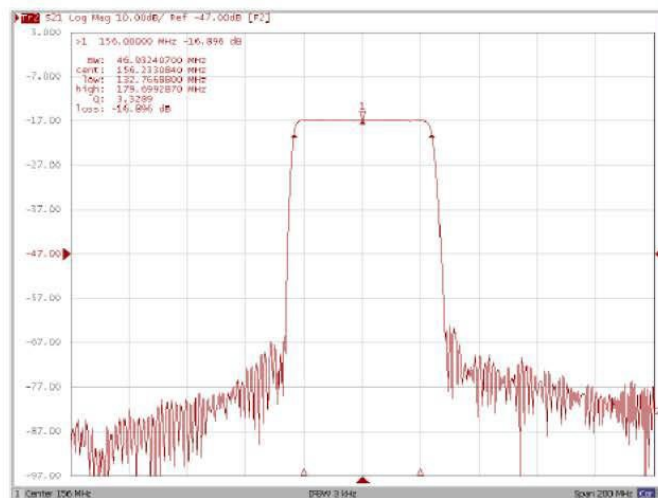


## Frequency Response:

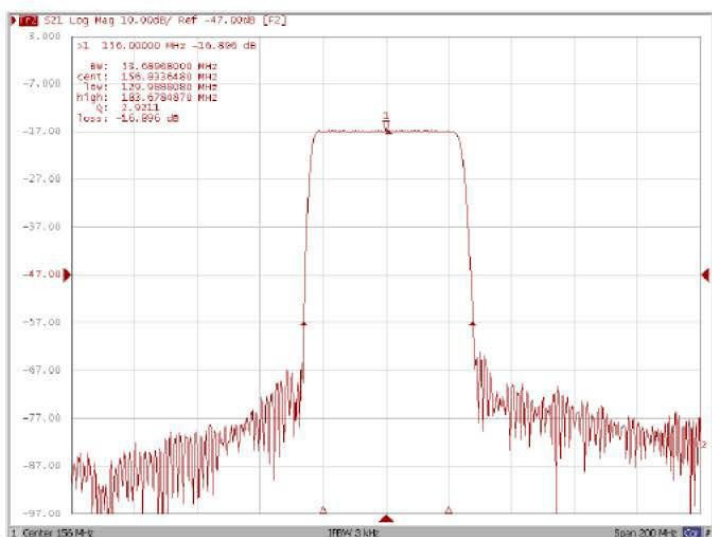
**Bandwidth at -1.0 dB**



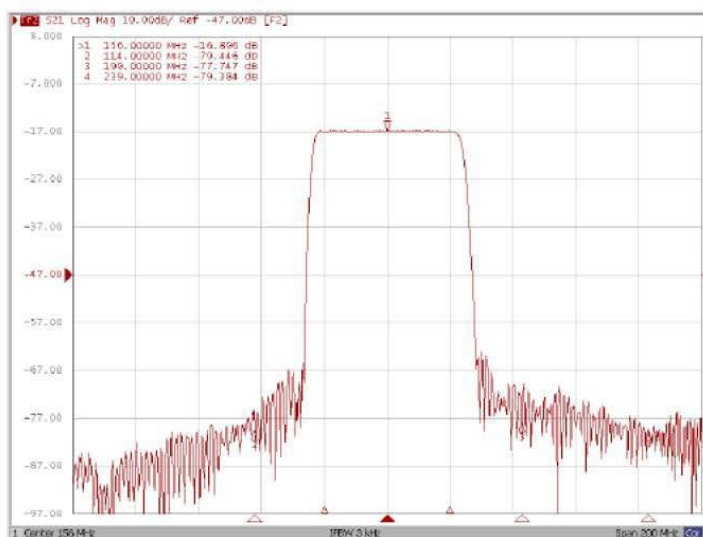
**Bandwidth at -3.0 dB**



**Bandwidth at -40.0 dB**



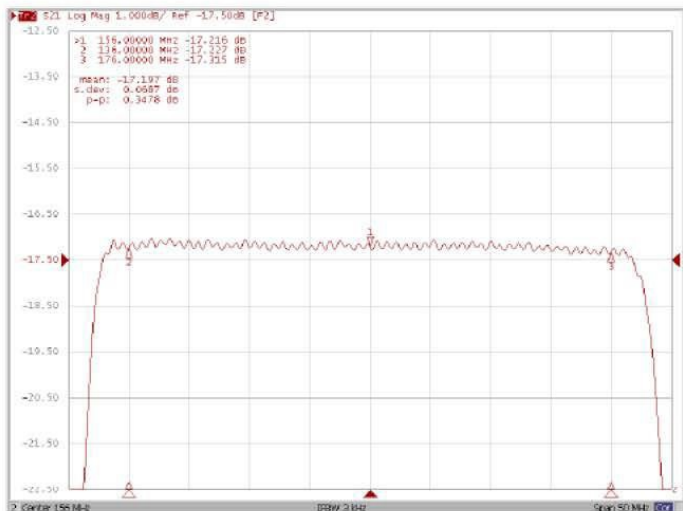
**Relative Attenuation**



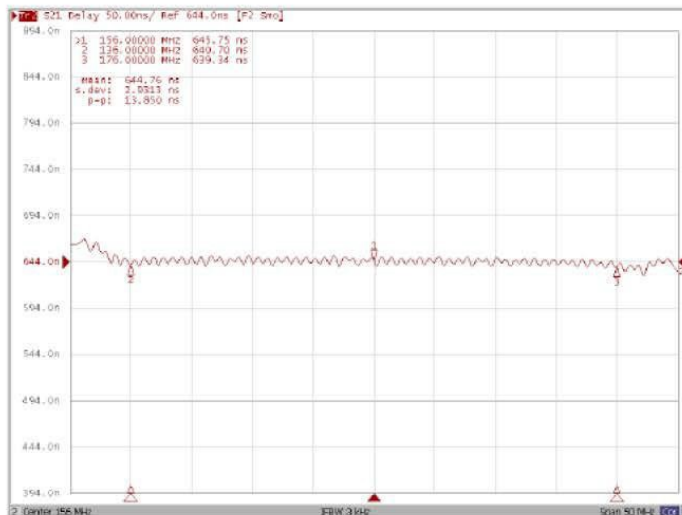


## Frequency Response:

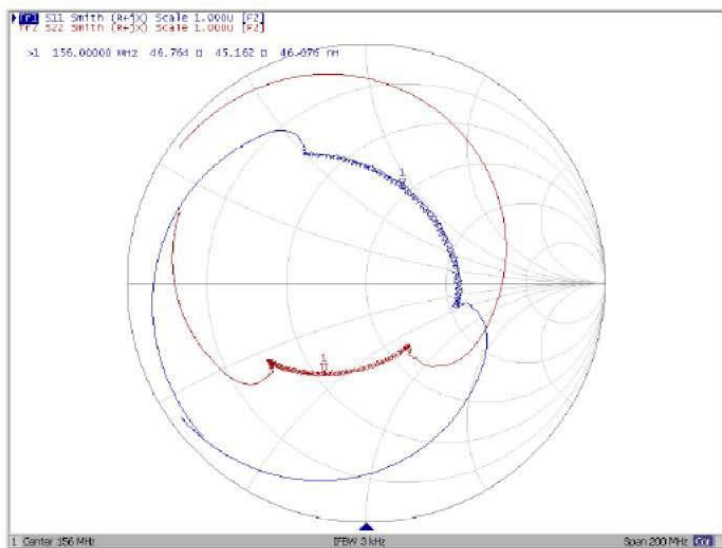
**Ripple Variation Fo±20.0MHz**



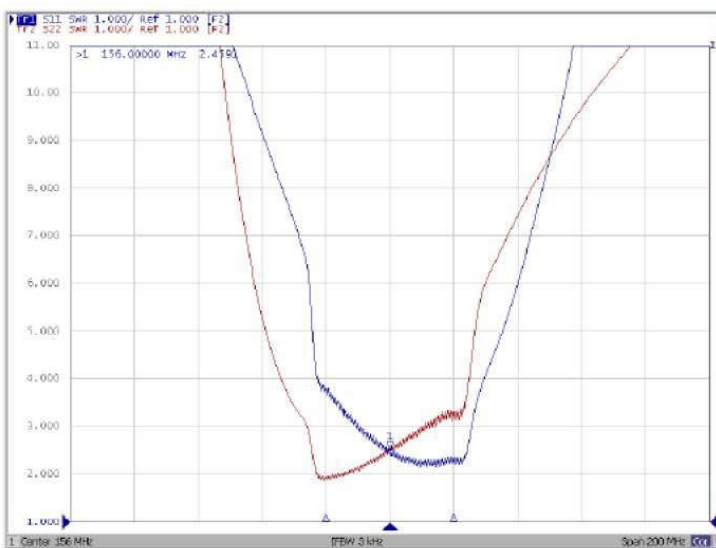
**Group Delay Variation Fo±20.0MHz**



**Smith Chart**



**VSWR**



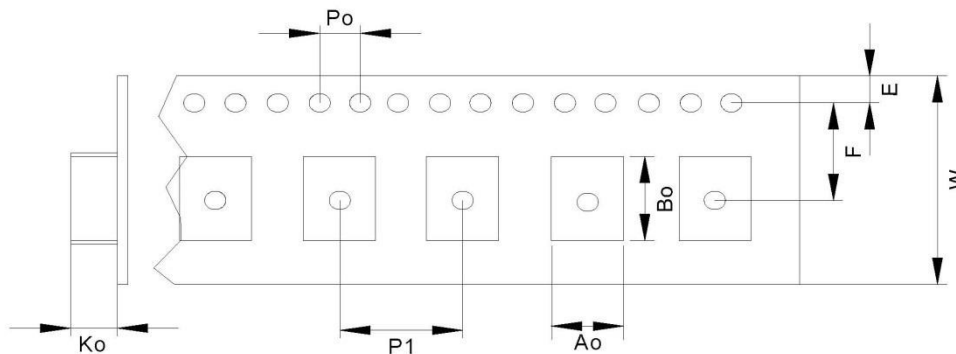


## Table of Contents

1. Packing
  - 1.1 Carrier Tape Dimension
  - 1.2 Top Cover Tape Adhesion
  - 1.3 Reel Dimension

### 1. Packing

#### 1.1 Carrier Tape Dimension



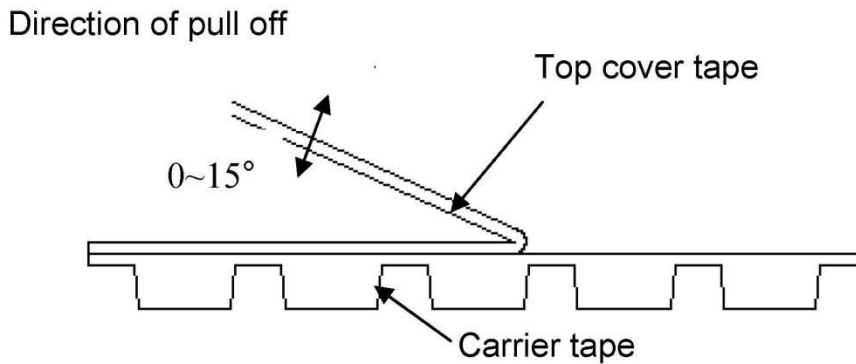
(Unit: mm)

A	B	K0	W	E	F	P0	P1
3.4±0.1	3.4±0.1	1.4±0.1	12.0±0.3	1.75±0.1	5.5±0.1	4.0±0.1	8.0±0.1

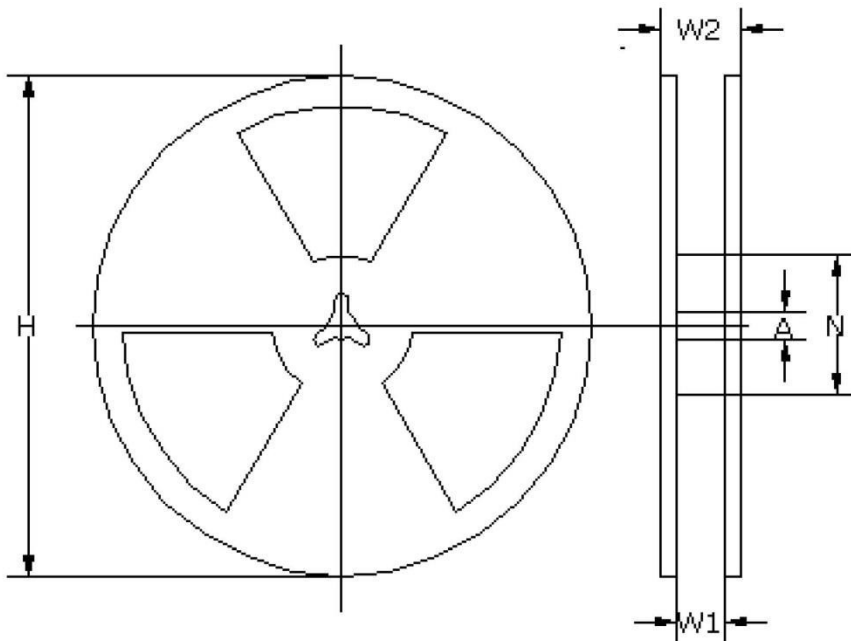


**1.2 Top Cover Tape Adhesion**

- 1.2.1 Pull of angle: 0 ~ 15 degree
- 1.2.2 Speed: 300 mm/min
- 1.2.3 Force : 20 ~ 70 g



**1.3 Reel Dimension**



(Unit: mm)

A	N	H	W1	W2
$\Phi 13 \pm 0.5$	$\Phi 62 \pm 1.0$	$\Phi 330.0 \pm 1.0$	$12.0 \pm 1.0$	$16.0 \pm 1.0$