

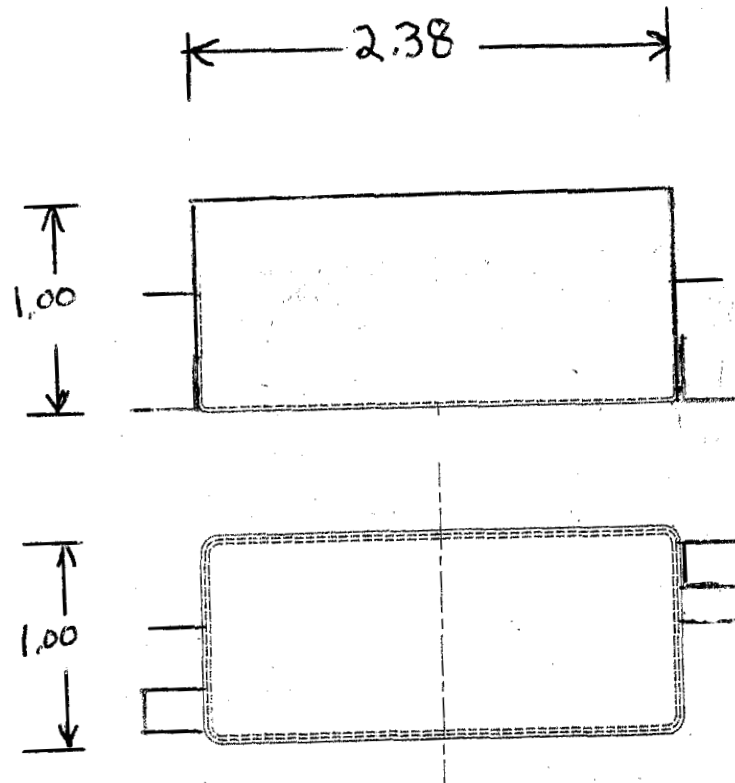


9.75 MHz Crystal Filter

P/N: AM9.75CR250

Center Frequency (Fo):	9.75 MHz
1 dB Bandwidth:	300 KHz
Attenuation:	50 dB
Insertion Loss:	1.25 dB max
Rejection Frequency on Low Side:	8.3 MHz
Rejection Frequency on High Side:	11.2 MHz
Power Handling:	1 Watt

Outline Drawing:





9.75 MHz Crystal Filter

P/N: AM9.75CR250

Plot:

