



902.5 MHz Ceramic Band Pass Filter



ANATECH ELECTRONICS INC
RF & Microwave Filters & Products

Part Number: AM902B1662

Electrical Specifications

Center Frequency: 902.5 MHz
Bandwidth: $F_0 \pm 12.5$ MHz
Insertion Loss: 3.5 dB Max
Ripple in BW: 2.0 dB Max
Return Loss: 15.0 dB Min
Attenuation: >40 dB @ DC~860 MHz
>35 dB @ 925~960 MHz
>50 dB @ 960~1200 MHz
Input Power: 5.0 W Max

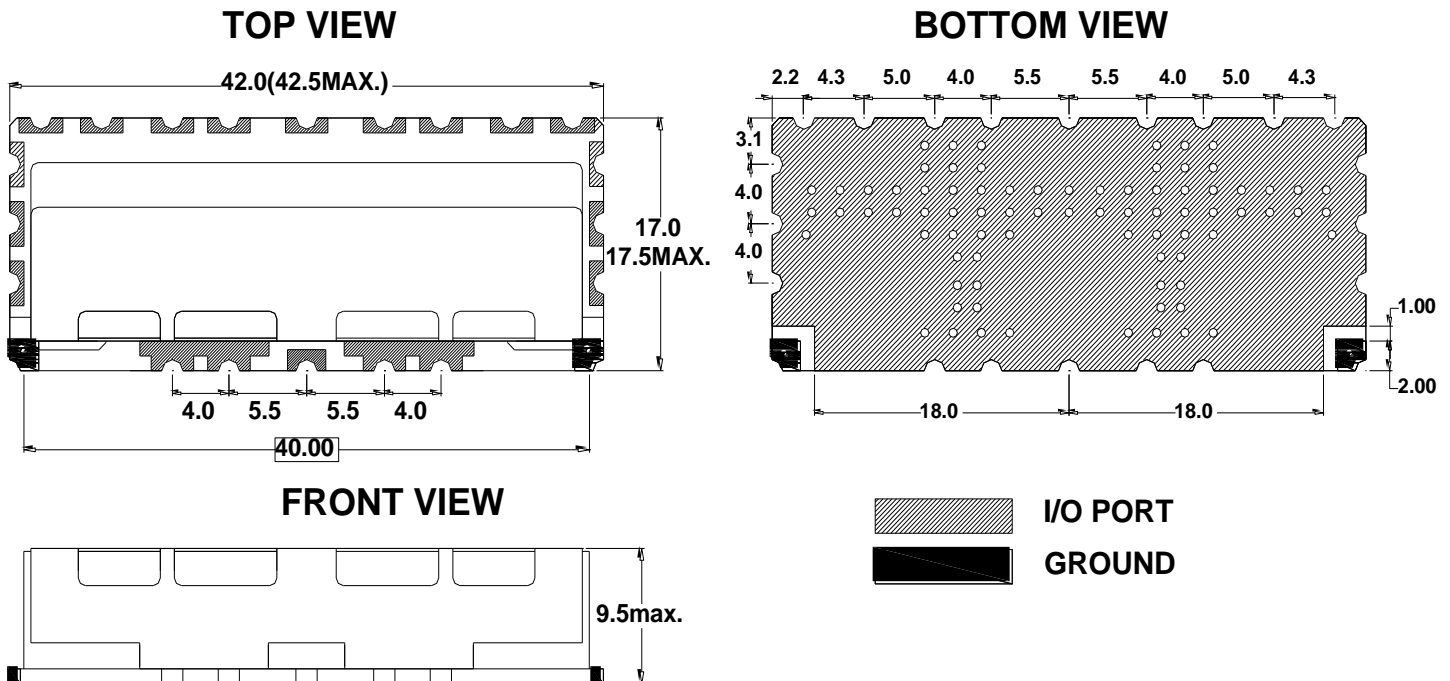
Mechanical

Mounting Method: SMT
Dimensions: 42.0 x 17.0 x 9.5 mm

Environmental

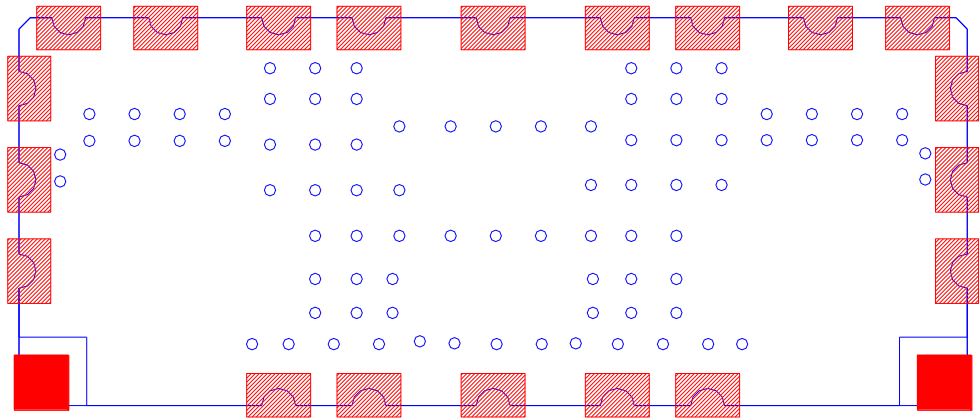
Operating Temperature: -40 to +85° C



Outline Drawing:





PCB Layout:



-  GROUND SOLDERING POINT
-  I/O PORT SOLDERING POINT